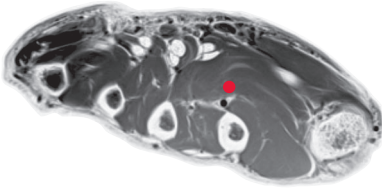
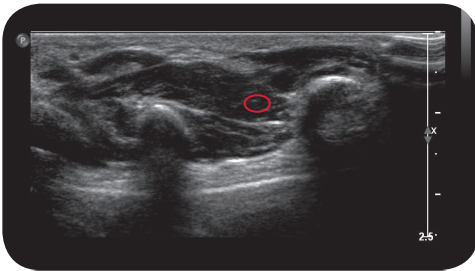


adductor pollicis

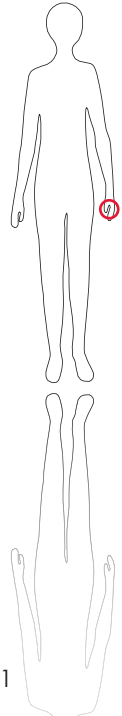
**



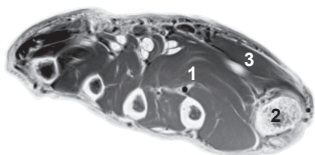
M R I



U l t r a s o u n d



131



L e e g e n d

1: M. adductor pollicis 2: proximal phalanx of thumb 3: M. opponens pollicis

O r i g i n

Capitate and second and third metacarpal bones

I n s e r t i o n

Base of proximal phalanx of thumb

I n n e r v a t i o n

Deep branch of ulnar nerve

F u n c t i o n

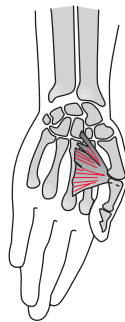
Adducts thumb

C o n t r o l o f I n j e c t i o n

Sonography, electrical stimulation

C o m m e n t

Important muscle for thumb-in-palm deformity. Using sonography, you can inject the muscle from dorsally which is less painful!



S c o u t