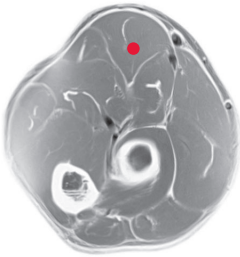
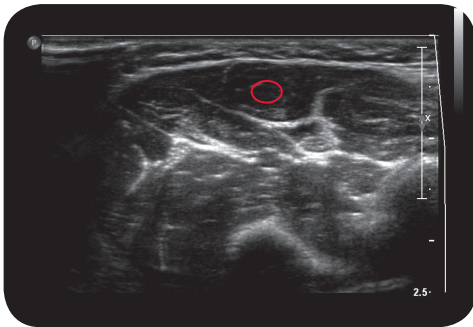


flexor carpi radialis

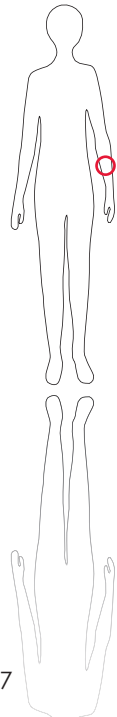
Cross Section



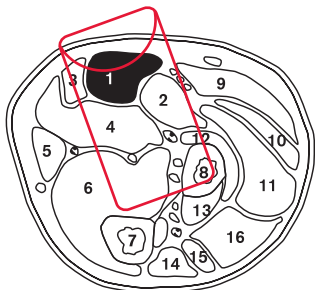
M R I



U l t r a s o u n d



107



L e g e n d

1: M. flexor carpi radialis 2: M. pronator teres 3: M. palmaris longus 4: M. flexor digitorum superficialis 5: M. flexor carpi ulnaris 6: M. flexor digitorum profundus 7: Ulna 8: Radius 9: M. brachioradialis 10: M. extensor carpi radialis longus 11: M. extensor carpi radialis brevis 12: M. supinator 13: M. abductor pollicis longus 14: M. extensor carpi ulnaris 15: M. extensor digiti minimi 16: M. extensor digitorum

O r i g i n

Medial epicondyle of humerus

I n s e r t i o n

Base of second and third metacarpal bone

I n n e r v a t i o n

N. medianus (C6-C8)

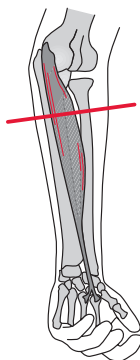
F u n c t i o n

Palmar flexion of wrist joint. Weak radial abduction when wrist is extended. Strong ulnar abduction when wrist is flexed. Pronation and elbow flexion.

Control of Injection Sonography, electrical stimulation

C o m m e n t

Very common indication; involved in most pronation and flexion deformities; 1-2 injection sites.



S c o u t

