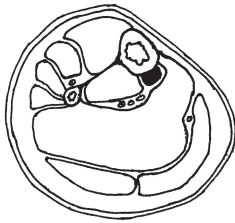
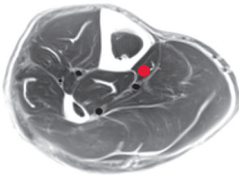


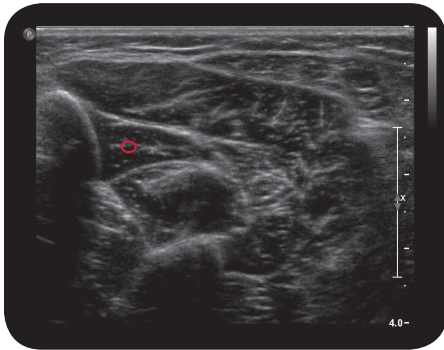
flexor digitorum longus



Cross Section

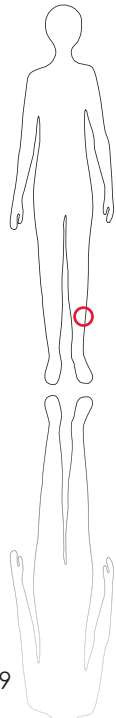


M R I

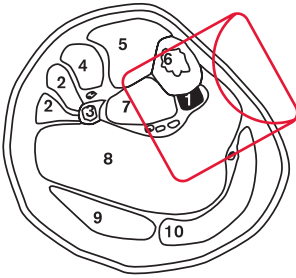


U l t r a s o u n d

**



169



L e g e n d

1: M. flexor digitorum longus 2: M. peroneus longus et brevis 3: Fibula 4: M. extensor digitorum longus 5: M. tibialis anterior 6: Tibia 7: M. tibialis posterior 8: M. soleus 9: M. gastrocnemius lateralis 10: M. gastrocnemius medialis

O r i g i n

Medial and distal two thirds of dorsal surface of tibia; sheath of posterior tibial muscle

I n s e r t i o n

Base of distal phalanges of second to fifth toes

I n n e r v a t i o n

N. tibialis (L5-S2)

F u n c t i o n

Flexes second to fifth distal toe joints; involved in flexion of second to fifth metatarsophalangeal toe joints, plantar flexion of ankle joint and supination of subtalar joint

Control of Injection

Sonography, electrical stimulation

C o m m e n t

Leading muscle in claw-foot involving second to fifth toes; 1-2 injection sites.