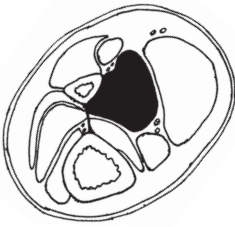
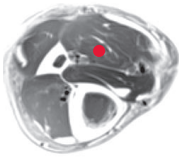


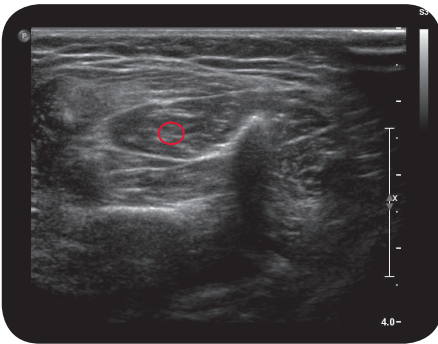
flexor hallucis longus



C r o s s S e c t i o n

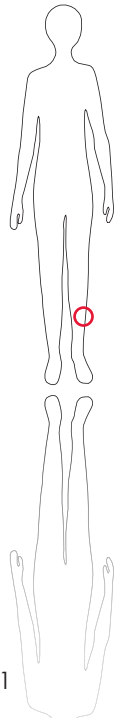


M R I

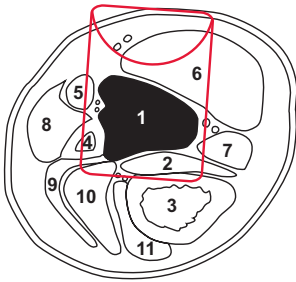


U l t r a s o u n d

*



171



L e g e n d

1: M. flexor hallucis longus, 2: M. tibialis posterior, 3: Tibia, 4: Fibula, 5: M. peroneus longus, 6: M. soleus, 7: M. flexor digitorum longus, 8: M. peroneus brevis, 9: M. extensor digitorum longus, 10: M. extensor hallucis longus, 11: M. tibialis anterior

O r i g i n

Distal two thirds of dorsal surface of fibula, interosseous membrane

I n s e r t i o n

Base of distal phalanx of great toe

I n n e r v a t i o n

N. tibialis (L5-S2)

F u n c t i o n

Flexes distal phalangeal joint of great toe; participates in flexion of metatarsophalangeal joint of great toe, plantar flexion of ankle joint and supination of subtalar joint

Control of Injection

Sonography, electrical stimulation

C o m m e n t

Leading muscle in great-toe clawfoot; one to two injection sites