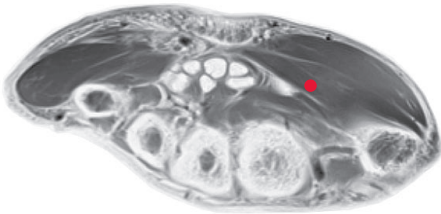
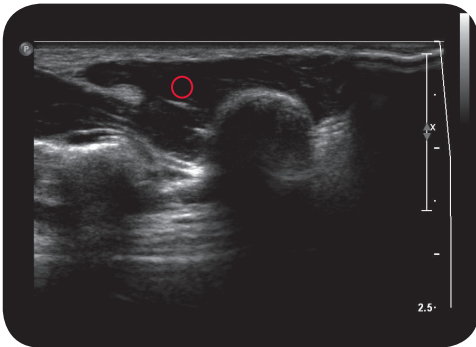


flexor pollicis brevis

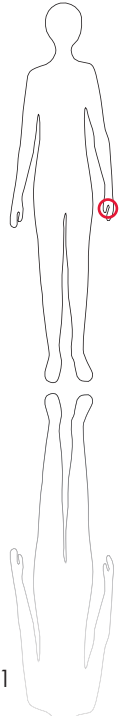
**



M R I



U l t r a s o u n d



121

O r i g i n
Retinaculum flexorum, Os trapezium, Os trapezoidium, Os capitatum

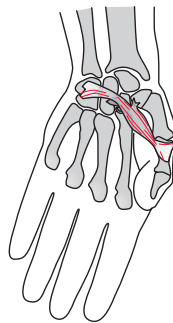
I n s e r t i o n
base of proximal phalanx of thumb

I n n e r v a t i o n
Recurrent branch of median nerve (C8,T1)

F u n c t i o n
flexes the thumb at the first metacarpophalangeal joint

Control of Injection
sonography, electrical stimulation

C o m m e n t
Inject this muscle when you see inadequate flexion in the first metacarpophalangeal joint, as e.g. in thumb-in-palm deformity. Frequent indication for better hygienic care and improved grasping movements.



S c o u t