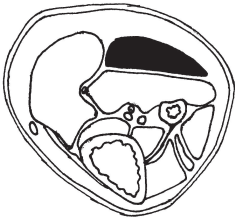
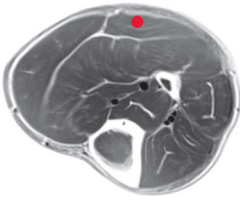


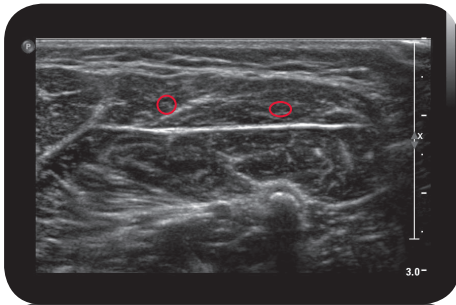
gastrocnemius,
lateral head



Cross Section

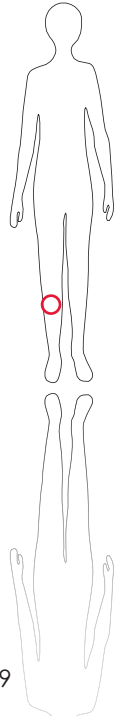


M R I

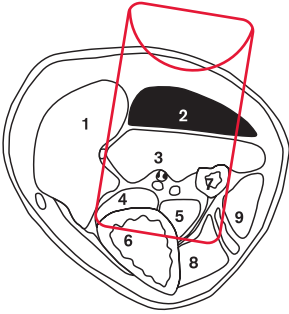


U l t r a s o u n d

*



159



L e g e n d
 1. medial head 2. lateral head 3: M: soleus 4: M: flexor digitorum longus 5: M: tibialis posterior 6: Tibia 7: Fibula 8: M: tibialis anterior 9: M: peroneus longus et brevis

O r i g i n
 Epicondylus medialis femoris

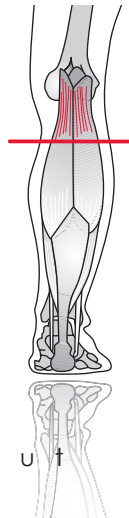
I n s e r t i o n
 Tuber calcanei by tendon calcaneus (Achilles tendon)

I n n e r v a t i o n
 N. tibialis (L5-S1)

F u n c t i o n
 Flexion of the foot at the upper ankle joint, flexion of the leg at the knee

Control of Injection
 Sonography, electrical stimulation.

C o m m e n t
 Usually of only slight bulk and very small diameter, this muscle is seated in the middle of the lower leg. CAUTION: If inserted too deeply, the needle may pass through and beyond the muscle. It is not necessary to inject this muscle when treating pes equinovarus. Use 1-2 injection sites.



S c o u t