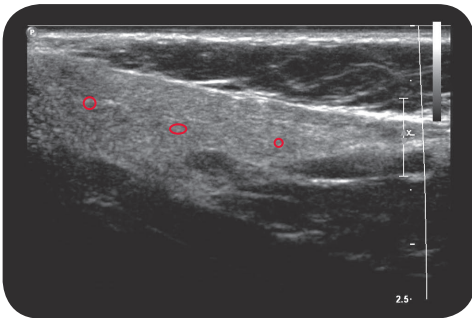
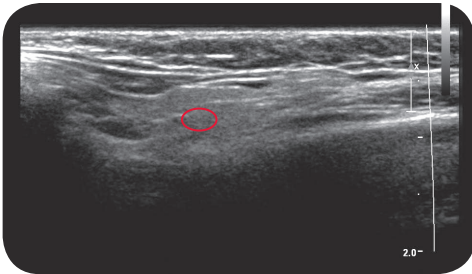
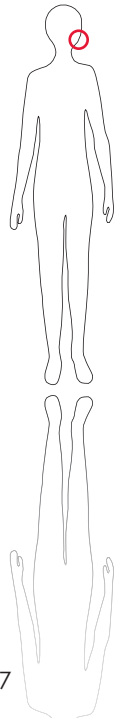


# glandula parotis

\*\*\*

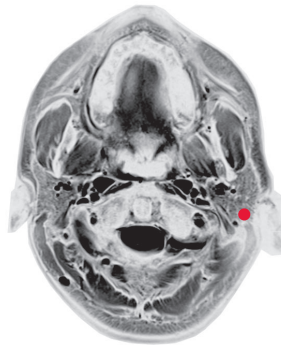


U l t r a s o u n d



177

C o m m e n t  
The parotid gland produces a primarily serous saliva, about 1/3 of the total daily amount. Secretion of saliva mainly occurs reflexively, for example, in response to a gustatory stimulus. The parotid gland has a preauricular (a) and a retromandibular (b) part. Due to their spatial extension, each of these parts should be injected.



M R I



Placement of probe