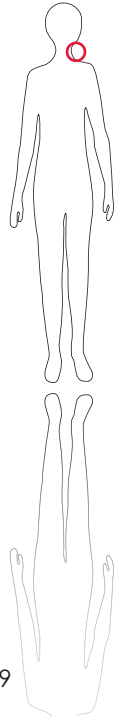
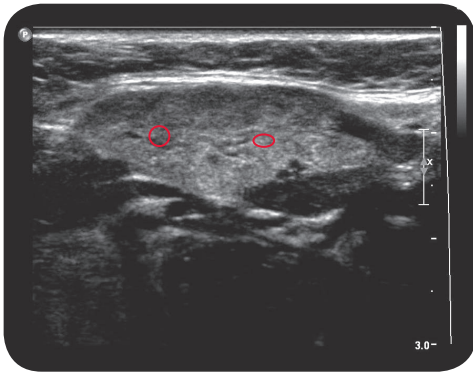


glandula submandibularis



U l t r a s o u n d

179

C o m m e n t

The submandibular gland produces seromucous saliva. Its innervation is less dependent on gustatory stimuli than that of the parotid gland. Injection of the submandibular gland is always indicated if BoNT treatment of the parotid gland alone fails to control excessive salivary flow. Because the submandibular is more compact than the parotid gland, a single injection site is sufficient.



Placement of probe