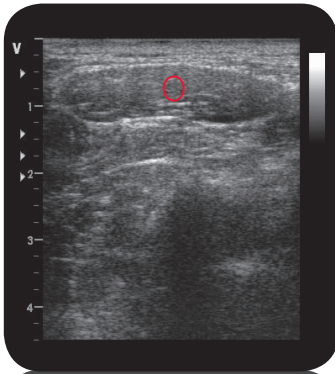
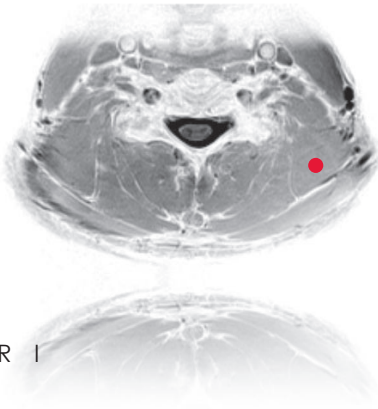
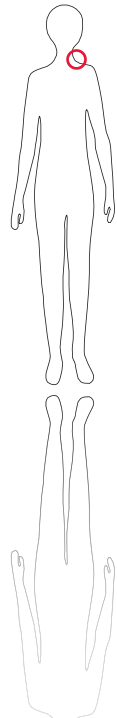


levator scapulae



U l t r a s o u n d



O r i g i n
Massa lateralis atlantis
and transverse processes
of second to fourth cervical
vertebrae

I n s e r t i o n
Margo medialis scapulae
between angulus superior
and spine

I n n e r v a t i o n
Rami dorsales (C2-C5),
N. dorsalis scapulae

F u n c t i o n
Lateral movement and ip-
silateral rotation of head
Raises shoulder blade

Control of Injection
Sonography, Palpation,
EMG

C o m m e n t
Frequently treated muscle
in case of elevated shoulder.
Often pressure sensitive
and easily palpable.
2-4 injection sites.

