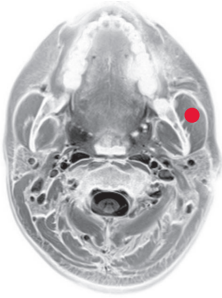
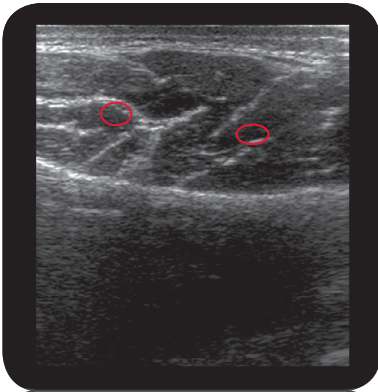


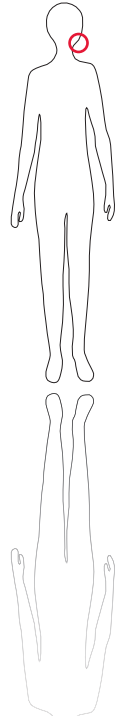
masseter



A x i a l M R I



U l t r a s o u n d



O r i g i n
Arcus zygomaticus

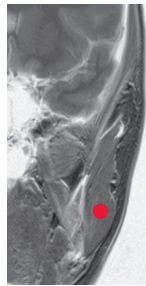
I n s e r t i o n
Lateral surface of ramus to
angle of mandible

I n n e r v a t i o n
N. massetericus division of
trigeminal nerve

F u n c t i o n
Closes jaws

Control of Injection
Palpation while patient
firmly bites teeth together.
Sonography, EMG

C o m m e n t
The superficial part of the
muscle is more prominent
and runs at an angle. The
deep-seated part runs ver-
tically and always should
be co-treated in cases of
trismus; 1-2 injection sites.



C o r o n a r M R I



I n j e c t i o n