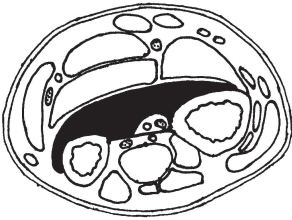
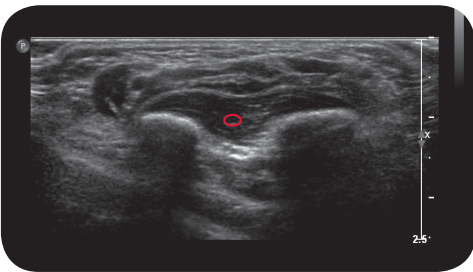


pronator quadratus

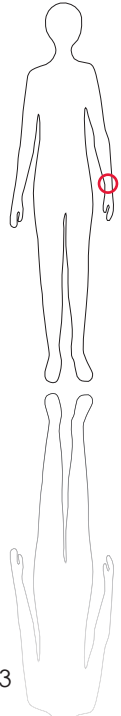
*



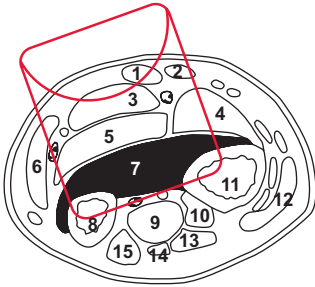
Cross Section



U l t r a s o u n d



113



L e g e n d

- 1: M. palmaris longus
 2: M. flexor carpi radialis
 3: M. flexor digitorum superficialis
 4: M. flexor pollicis longus
 5: M. flexor digitorum profundus
 6: M. flexor carpi ulnaris
 7: M. pronator quadratus
 8: Ulna
 9: M. extensor indicis
 10: M. extensor pollicis longus
 11: Radius
 12: M. extensor pollicis brevis
 13: M. extensor digitorum
 14: M. extensor digiti minimi
 15: M. extensor carpi ulnaris

O r i g i n

Distal palmar face of ulna

I n s e r t i o n

Distal palmar face of radius

I n n e r v a t i o n

Anterior interosseus nerve of N. medianus (C6-C8)

F u n c t i o n

Pronation of forearm

Control of Injection Sonography, electrical stimulation

C o m m e n t

To be injected in addition to pronator teres when severe pronation is observed. Easily identified by sonographic guidance due to radioulnar fiber orientation in the transversal plane.



S c o u t