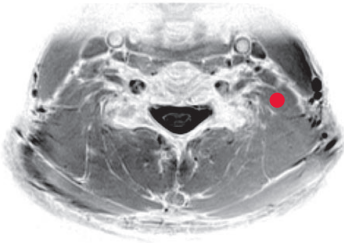
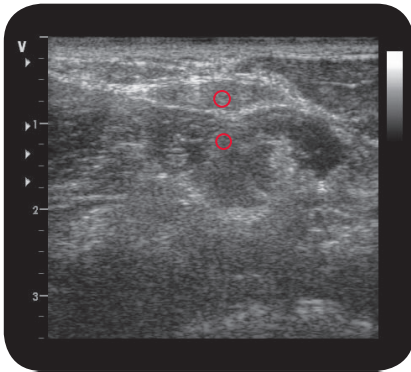


scalenus anterior et medius

**



M R I



U l t r a s o u n d



85

O r i g i n

Anterior tubercle of transverse processes of, respectively, third to sixth (anterior) and second to seventh (medius) cervical vertebrae

I n s e r t i o n

First and second rib ventral, scalene tubercle

I n n e r v a t i o n

Plexus cervicalis and brachialis

F u n c t i o n

Unilateral: ipsilateral flexion of head

Bilateral: anteversion of head

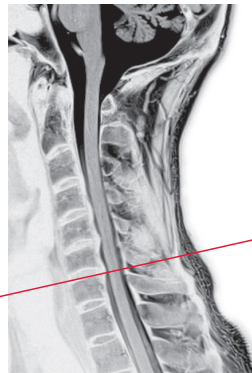
Auxiliary respiratory muscles: raise cranial ribs

C o n t r o l o f I n j e c t i o n

EMG (for activation of muscles ask patient to breath in deeply) or sonography

C o m m e n t

Often pressure sensitive and palpable



M R I - S c o u t