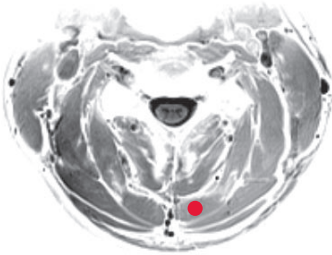
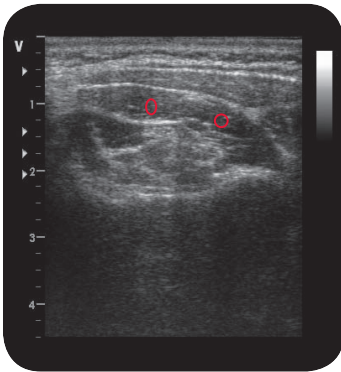
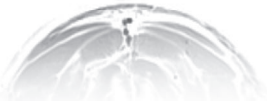


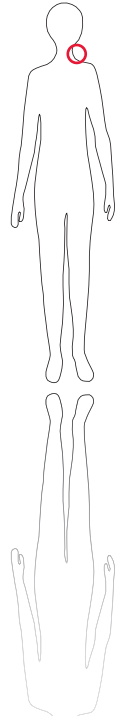
semispinalis capitis



M R I



U l t r a s o u n d



O r i g i n
Transverse and spinous
processes of second to se-
venth cervical vertebrae

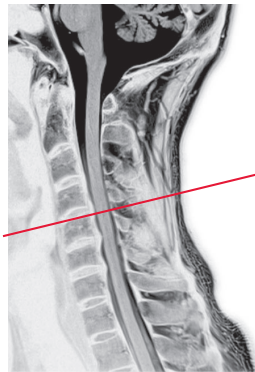
I n s e r t i o n
Linea inferior ossis occipi-
talis

I n n e r v a t i o n
Nervi cervicales (C1-C7)

F u n c t i o n
Unilateral: contralateral
flexion of head
Bilateral: retroflexion of
head

Control of Injection
Palpation, sonography,
EMG

C o m m e n t
Because the semispinalis
is deep-seated there is a
risk of inadvertent cisternal
puncture. To avoid this,
locate the tendinous junc-
tion of the trapezius mus-
cle with the skull and insert
the needle about 1-3 cm
below this area and 1-3
cm paramedially through
the trapezius and the sple-
nius. Use sonography!



M R I - S c o u t