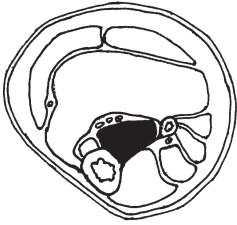
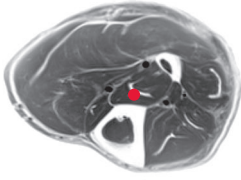


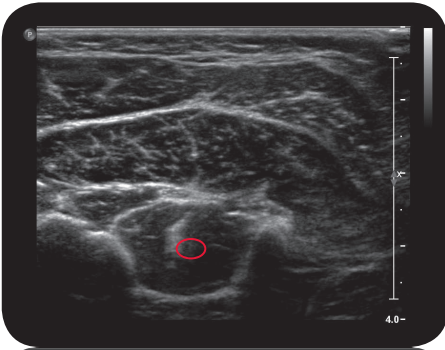
tibialis posterior



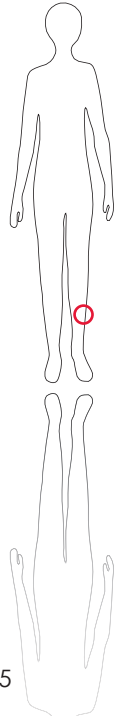
Cross Section



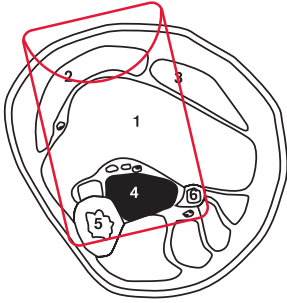
M R I



U l t r a s o u n d



165



L e g e n d

1: M. soleus 2: M. gastrocnemius medialis 3: M. gastrocnemius lateralis 4: M. tibialis posterior 5: Tibia 6: Fibula

O r i g i n

Interosseous membrane; dorsolateral surface of tibia; proximal two thirds of dorsomedial surface of fibula

I n s e r t i o n

Tuberositas os naviculare; Ossa cuneiformia; Base of os metatarsalia 2-4

I n n e r v a t i o n

N. tibialis (L5-S1)

F u n c t i o n

Plantar flexion of ankle joint; supination of subtalar joint; tensor for arch of foot; push-off during transition from stance to swing phase

C o n t r o l o f I n j e c t i o n

Sonography, electrical stimulation

C o m m e n t

Leading muscle in equinovarus posture. Feathered muscle with largest muscle bulk proximally in between tibia and fibula. Can be reached in children through M. soleus, in larger patients through M. tibialis anterior with sonography guidance.

2-3 injection sites.

