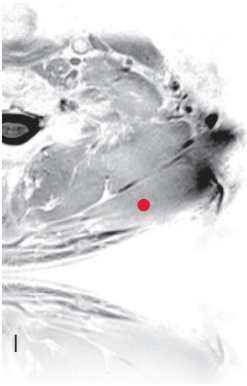
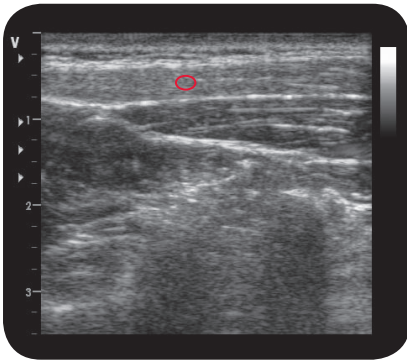


trapezius

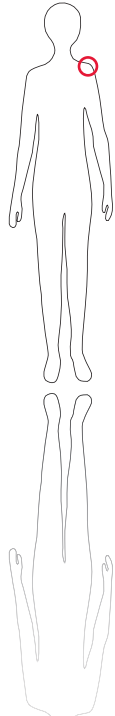
**



M R I



U l t r a s o u n d



O r i g i n
Spinous processes of all thoracic vertebrae

I n s e r t i o n
Medial margin of acromion, spine of scapula

I n n e r v a t i o n
N. accessorius, cervical plexus (C2-C4)

F u n c t i o n
Fixes scapula and draws scapula backward; depresses scapula

Control of Injection
The muscle is easy to palpate. Insert the needle tangentially.

C o m m e n t
This is a rare indication, often accompanied by a compensatory increase of muscle tone. Use 2-4 injection sites, insert needle tangentially.