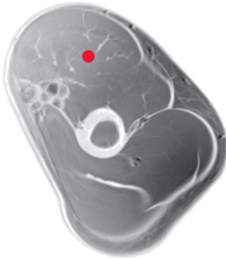


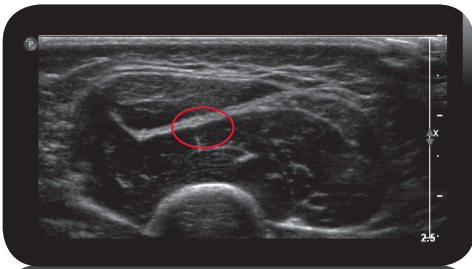
triceps

\*\*

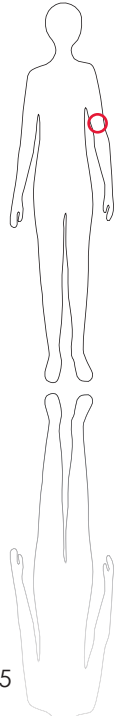
Cross Section



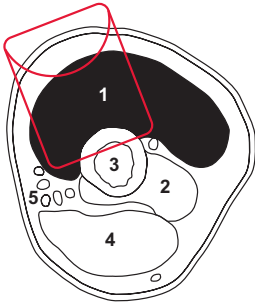
M R I



U l t r a s o u n d



105



### L e g e n d

- 1: M. triceps brachii  
 2: M. brachialis 3: Humerus  
 4: M biceps brachii 5: nerve-vessel-bundle

### O r i g i n

Caput longum: Tuberculum infraglenoidale scapulae  
 Caput laterale: Proximal half of lateral and dorsal humerus

### I n s e r t i o n

Olecranon and fascia antebrachii

### I n n e r v a t i o n

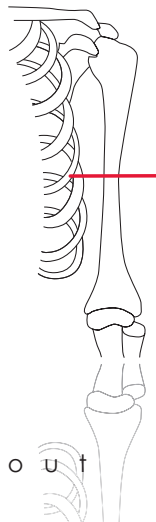
N. radialis (C5-T1)

### C o n t r o l o f I n j e c t i o n

Sonography, palpation, EMG, electrical stimulation

### F u n c t i o n

Extension of elbow. Long head also extends the arm at the shoulder joint.



### S c o u t